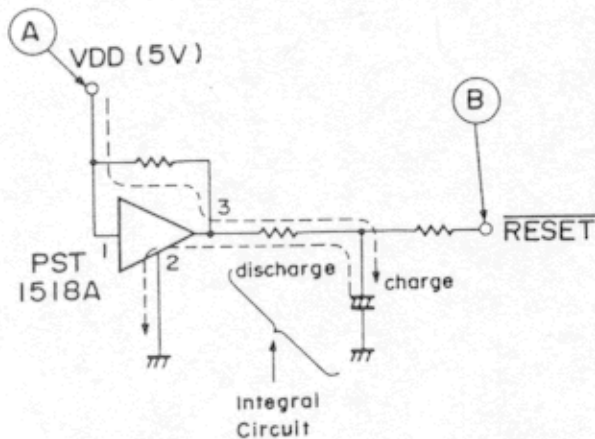


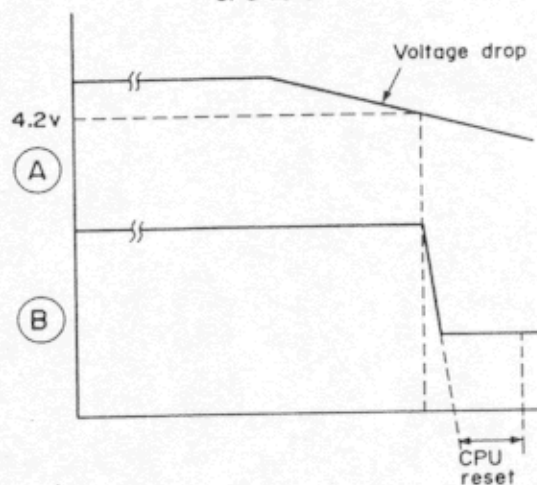
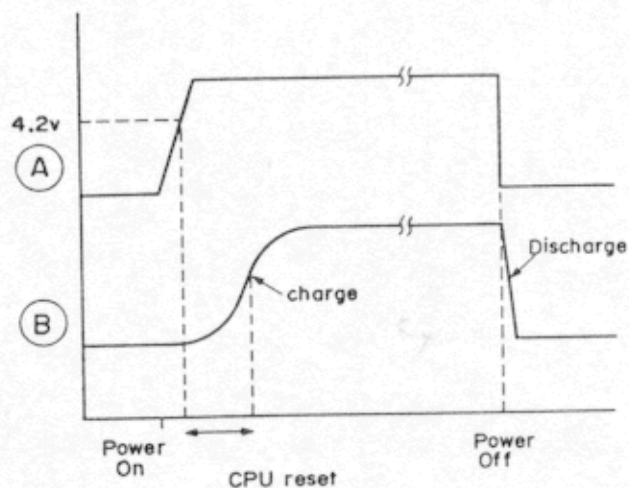
## 8 RESET CIRCUIT



In order to initialize CPU's internal circuits at Power ON, a voltage detector IC PST1518A generates RESET signal.

PST-1518 receives VDD (+5 V) from pin 1 and outputs Low level signal from pin 3 while the input voltage is less than +4.2 V and, pin 3 provides High level when VDD is more than +4.2 V.

When the power switch is turned on, signal RESET rises to High level gradually by the integral circuit. CPU then resets its internal circuits while RESET is Low.



When the power switch is turned off, the capacitor immediately discharges itself through pin 2 of PST1518A so that signal RESET is provided even the power switch is turned on, off, and on quickly.

CPU is also reset when the battery is weak and VDD becomes less than +4.2 V.